

RWE

MASDAR 

**RWE Renewables UK Dogger Bank
South (West) Limited**

**RWE Renewables UK Dogger Bank
South (East) Limited**

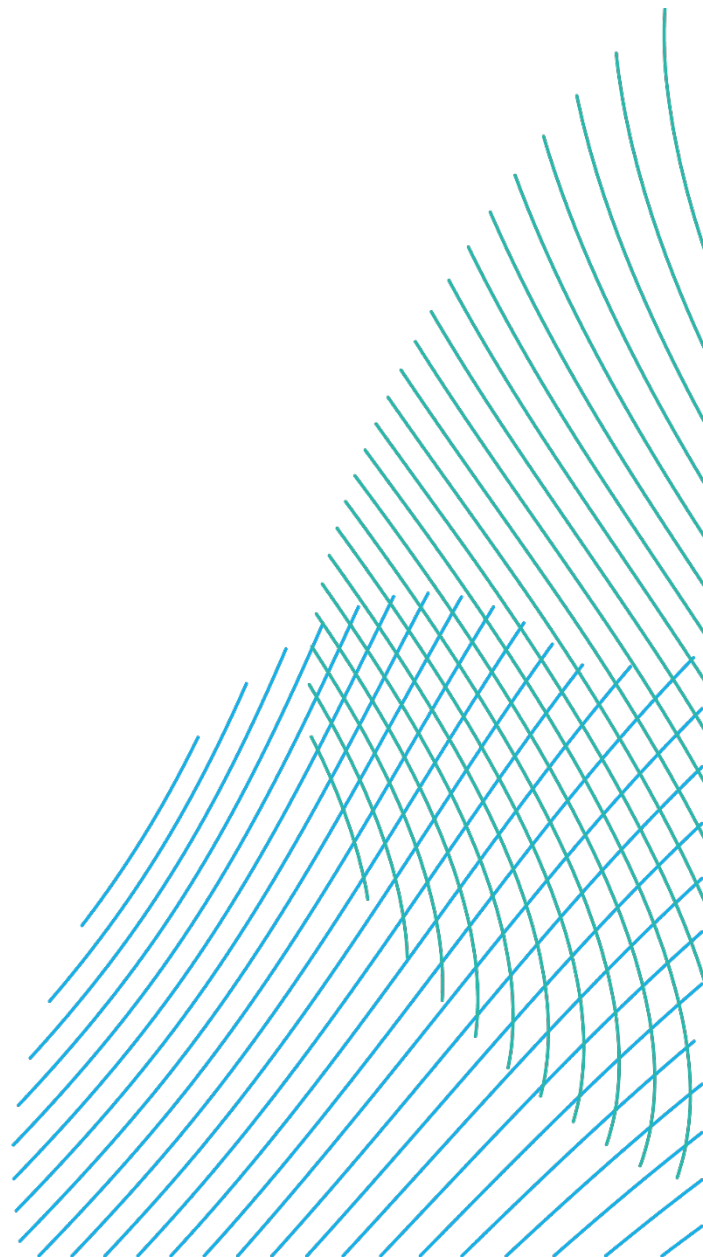
**Dogger Bank South Offshore
Wind Farms**

**Volume 2
Works Plan (Offshore)**

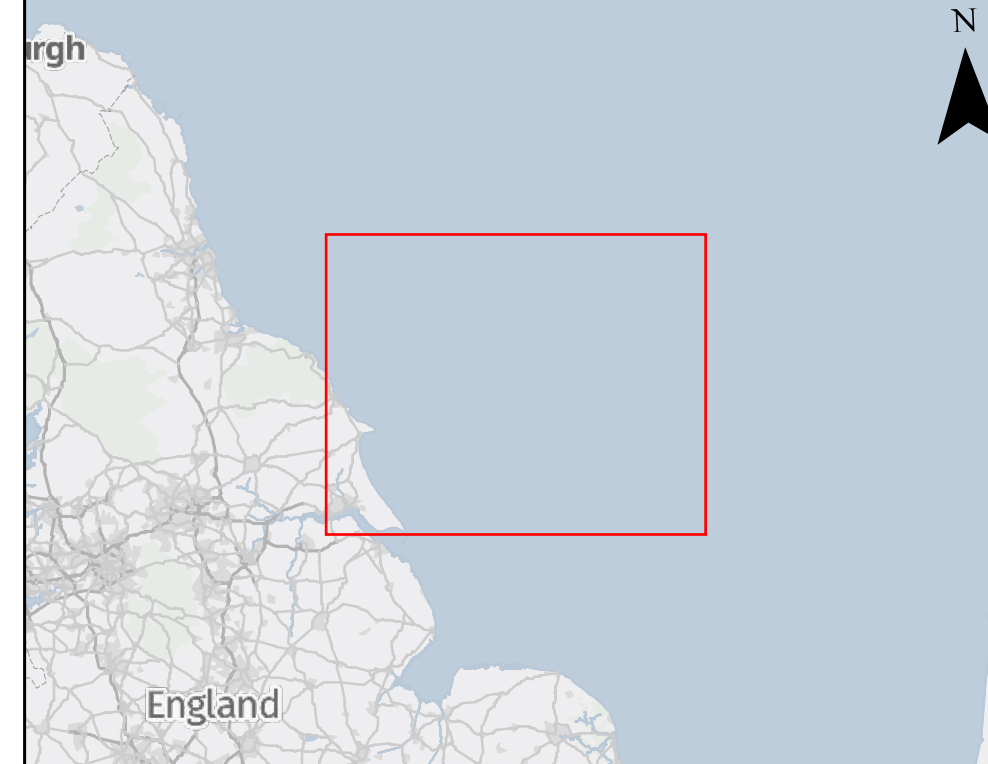
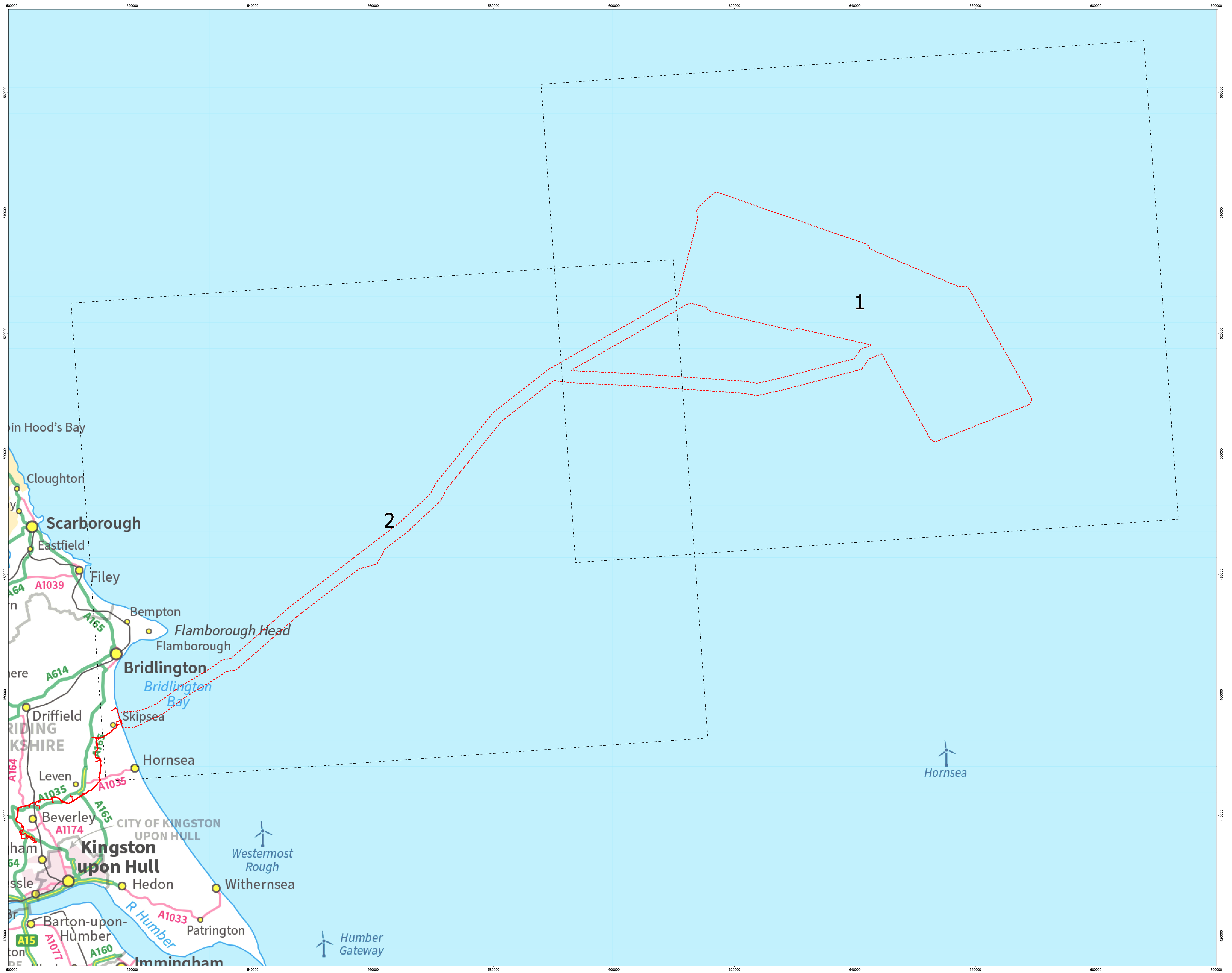
June 2024

**Application Reference: 2.5
APFP Regulation: 5(2)(j)
Revision: 02**

Unrestricted



Company:	RWE Renewables UK Dogger Bank South (West) Limited and RWE Renewables UK Dogger Bank South (East) Limited	Asset:	Development		
Project:	Dogger Bank South Offshore Wind Farms	Sub Project/Package:	Consents		
Document Title or Description:	Works Plan (Offshore)				
Document Number:	004525725-02	Contractor Reference Number:	N/A		
<p><i>COPYRIGHT © RWE Renewables UK Dogger Bank South (West) Limited and RWE Renewables UK Dogger Bank South (East) Limited, 2024. All rights reserved.</i></p> <p><i>This document is supplied on and subject to the terms and conditions of the Contractual Agreement relating to this work, under which this document has been supplied, in particular:</i></p> <p>LIABILITY</p> <p><i>In preparation of this document RWE Renewables UK Dogger Bank South (West) Limited and RWE Renewables UK Dogger Bank South (East) Limited has made reasonable efforts to ensure that the content is accurate, up to date and complete for the purpose for which it was contracted. RWE Renewables UK Dogger Bank South (West) Limited and RWE Renewables UK Dogger Bank South (East) Limited makes no warranty as to the accuracy or completeness of material supplied by the client or their agent.</i></p> <p><i>Other than any liability on RWE Renewables UK Dogger Bank South (West) Limited and RWE Renewables UK Dogger Bank South (East) Limited detailed in the contracts between the parties for this work RWE Renewables UK Dogger Bank South (West) Limited and RWE Renewables UK Dogger Bank South (East) Limited shall have no liability for any loss, damage, injury, claim, expense, cost or other consequence arising as a result of use or reliance upon any information contained in or omitted from this document.</i></p> <p><i>Any persons intending to use this document should satisfy themselves as to its applicability for their intended purpose.</i></p> <p><i>The user of this document has the obligation to employ safe working practices for any activities referred to and to adopt specific practices appropriate to local conditions.</i></p>					
Rev No.	Date	Status/Reason for Issue	Author	Checked by	Approved by
01	February 2024	Draft for PINS / TCE Submission	Wardell Armstrong	RWE	RWE
02	June 2024	Final for DCO Application	Wardell Armstrong	RWE	RWE



KEY:
 - - - Offshore Order Limits
 - - - Onshore Order Limits
 - - - Works Plans Sheets

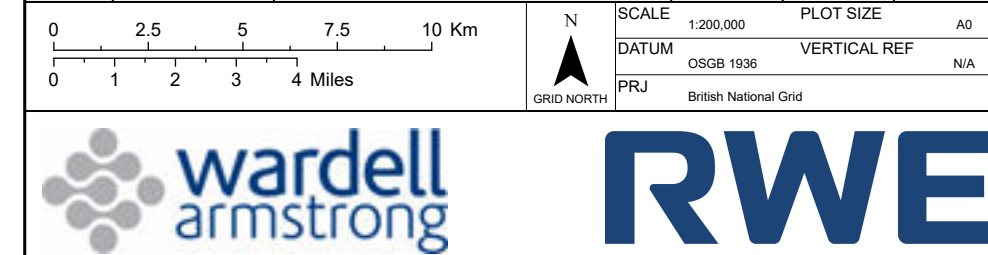
MAP NOTES / DATA SOURCES:
 Contains OS data © Crown Copyright and database right 2023
 Contains data from OS Zoomstack. Contains Ordnance Survey data. © Crown Copyright and database right 2024.
 Transformation applied to Offshore Order Limits using OSGB 1936 to WGS 1984 7 method
 Not to be used for Navigation.

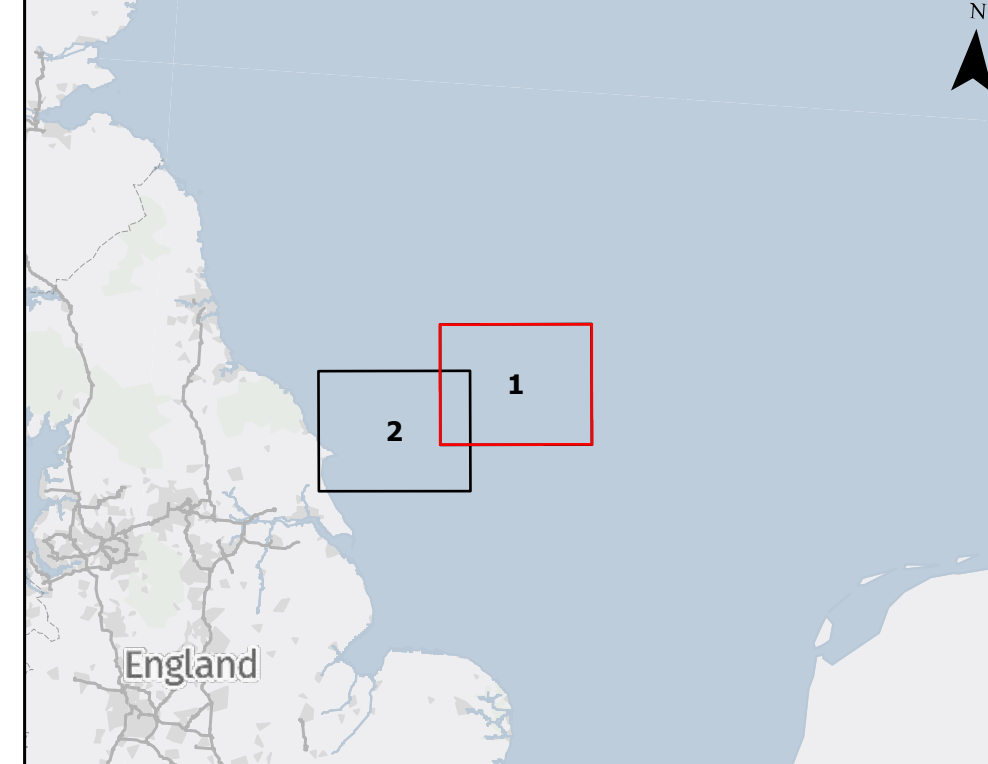
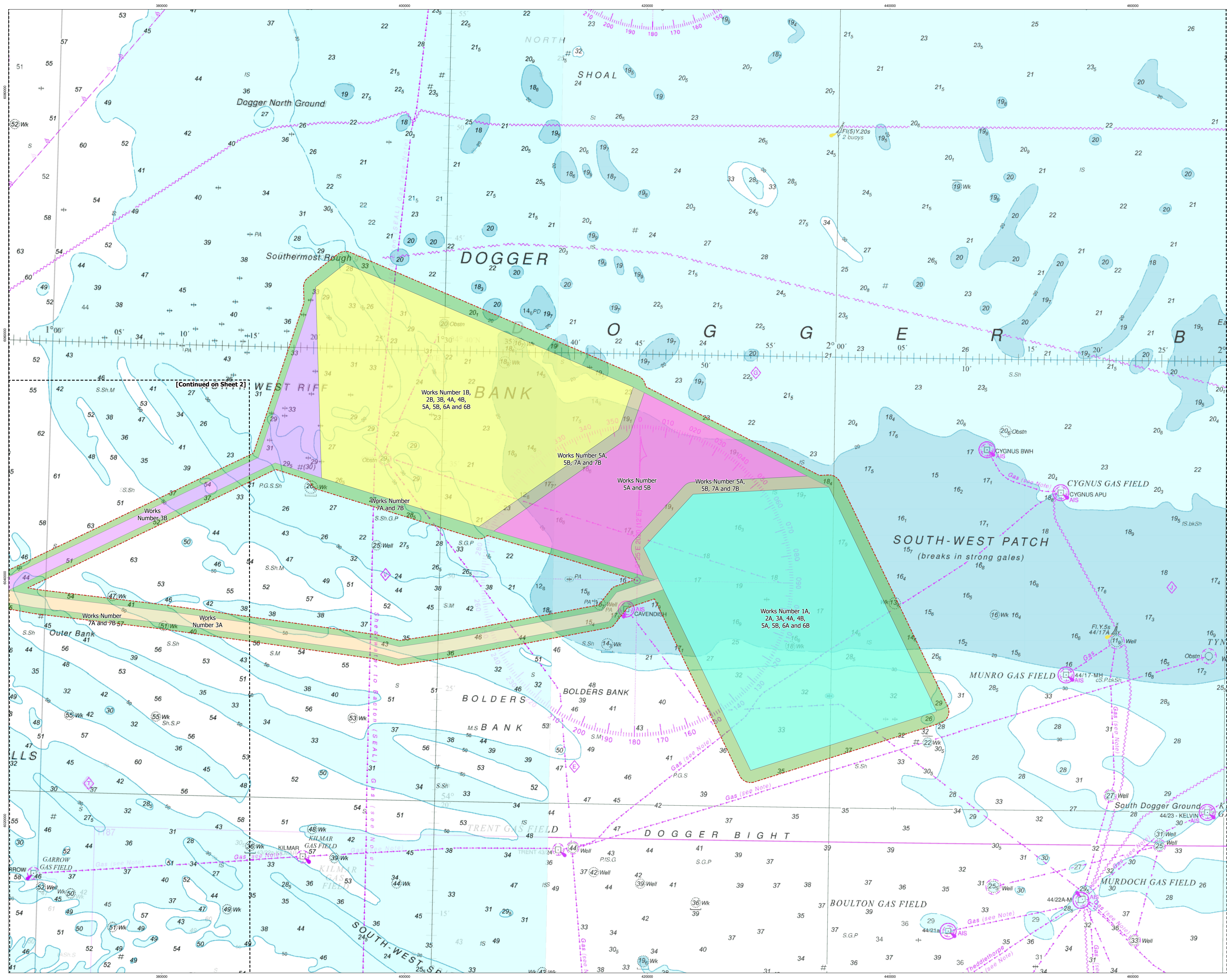
PROJECT TITLE
Dogger Bank South

DRAWING TITLE
Works Plan (Offshore) Overview

DRAWING NUMBER: ED13554-GE-1055 **PAGE NUMBER:** Page 1 of 1

VER	DATE	REMARKS	DRAW	CHEK	APPR
01	June 2024	Final for DCO Application	BL	PM	AH





- KEY:**
- Offshore Order Limits
 - Works Number 1A, 2A, 3A, 4A, 4B, 5A, 5B, 6A and 6B
 - Works Number 1B, 2B, 3B, 4A, 4B, 5A, 5B, 6A and 6B
 - Works Number 3A
 - Works Number 3A and 3B
 - Works Number 3B
 - Works Number 5A and 5B
 - Works Number 5A, 5B, 7A and 7B
 - Works Number 7A and 7B

Works Number	Works Name
1A	Works No. 1A, DBS East Wind Turbine Array Area
1B	Works No. 1B, DBS West Wind Turbine Array Area
2A	Works No. 2A, DBS East Electrical Platforms
2B	Works No. 2B, DBS West Electrical Platforms
3A	Works No. 3A, DBS East Export Cable Corridor
3B	Works No. 3B, DBS West Export Cable Corridor
4A/B	Works No. 4A/B, Accommodation Platform
5A/B	Works No. 5A/B, Project Inter-Link Cabling
6A/B	Works No. 6A/B, Electrical Switching Platform
7A/B	Works No. 7A/B, Temporary Construction Works

[Continued on Sheet 2]

MAP NOTES / DATA SOURCES:
 Contains OS data © Crown Copyright and database right 2023
 Contains data from OS Coastlines
 © British Crown and Oceanwise, 2022. All rights reserved. License No. EMS-EX001-702176
 Not to be used for Navigation. Head map above legend shown in British National Grid Projection.
 Background Mapping is the Marine Chart Map derived from data obtained from the UK Hydrological Office. All features not listed in the above are features of the background mapping, please refer to any charts Flamborough Head to Bakenham Point & River Tyne to Flamborough Head, England - East Coast Map Series and North Sea Offshore Charts - Sheet 11 for full details.

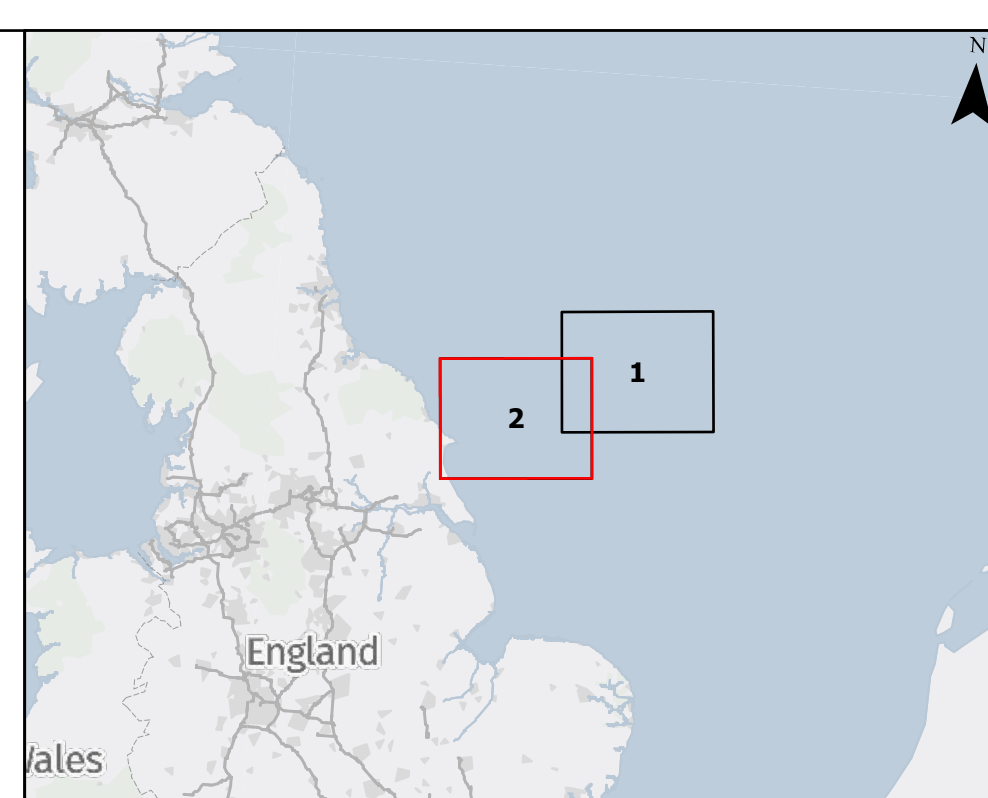
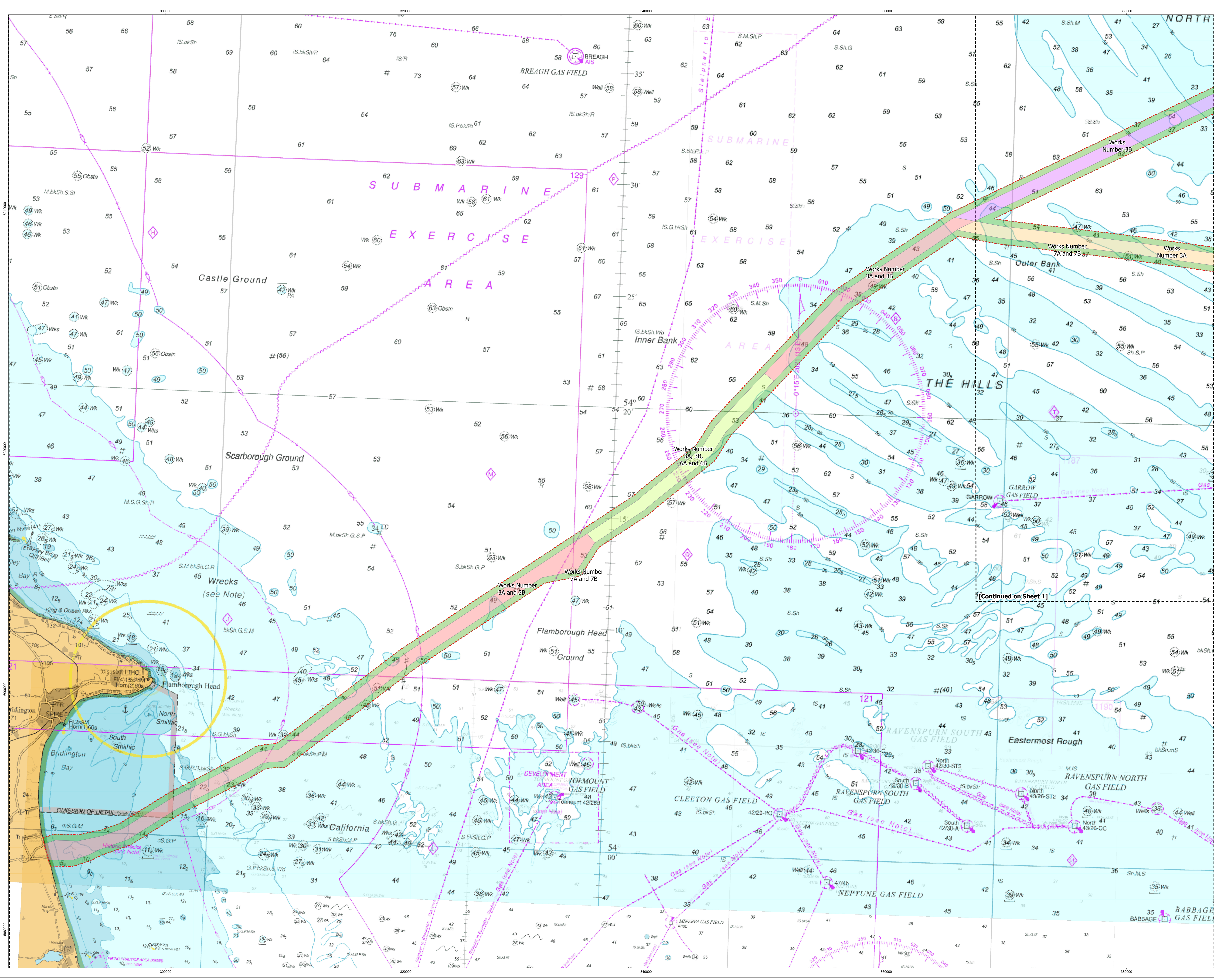
PROJECT TITLE
Dogger Bank South

DRAWING TITLE
Works Plans (Offshore)

DRAWING NUMBER:	ED13554-GE-1058	PAGE NUMBER:	Page 1 of 2
DATE:	June 2024	REMARKS:	Final for DCO Application
DRAWN:	BL	CHECK:	FM AH

SCALE: 1:50,000
 0 1 2 3 4 Km
 0 0.6 1.2 1.8 2.4 Miles

wardell armstrong **RWE**



KEY:

- Offshore Order Limits
- Works Number 3A
- Works Number 3A and 3B
- Works Number 3A, 3B, 6A and 6B
- Works Number 3B
- Works Number 7A and 7B

Works Number	Works Name
1A	Works No. 1A, DBS East Wind Turbine Array Area
1B	Works No. 1B, DBS West Wind Turbine Array Area
2A	Works No. 2A, DBS East Electrical Platforms
2B	Works No. 2B, DBS West Electrical Platforms
3A	Works No. 3A, DBS East Export Cable Corridor
3B	Works No. 3B, DBS West Export Cable Corridor
4A/B	Works No. 4A/B, Accommodation Platform
5A/B	Works No. 5A/B, Project Inter-Link Cabling
6A/B	Works No. 6A/B, Electrical Switching Platform
7A/B	Works No. 7A/B, Temporary Construction Works

MAP NOTES / DATA SOURCES:
 Contains OS data © Crown Copyright and database right 2023
 Contains data from OS ZOOMDATA
 © British Crown and Oceanwise, 2022. All rights reserved. License No. EMS-EX001-192176
 Not to be used for Navigation. Head above legend shown in British National Grid Projection.
 Background Mapping is the Marine Chart Map derived from data obtained from the UK Hydrological Office. All features not listed in the above are features of the background mapping, please refer to any charts Flamborough Head to Ballymore Point & River Tyne to Flamborough Head, England - East Coast Map Series and North Sea Offshore Charts - Sheet 11 for full details.

PROJECT TITLE
Dogger Bank South

DRAWING TITLE
Works Plans (Offshore)

DRAWING NUMBER:	ED13554-GE-1058	PAGE NUMBER:	Page 2 of 2
DATE:	June 2024	REMARKS:	Final for DCO Application
DRAWN:	BL	CHECKED:	FM
APPROVED:		APPROVED:	AH

SCALE: 1:50000
 0 1 2 3 4 Km
 0 0.6 1.2 1.8 2.4 Miles